



## 2808/BI SISTEMA POLO

design elio martinelli, 1986

Outdoor wall or ceiling lamp, diffused light. Resin structure, sandblast glass diffuser, stainless steel grill. White, anthracite or corten paint structure. For Led bulb.

### 2808/BI sistema polo

family:	sistema polo	Body Color:	<input type="radio"/> other available colors <input checked="" type="radio"/>
Designers:	Elio Martinelli	Diffuser Color:	<input type="radio"/>
Utilization:	external	Body Materials:	resin
Typology:	outdoor ceiling	Diffuser Materials:	sandblasted glass
Certifications:			
Market:	This item is available in the following countries: EUROPE		

#### Dimensions

Width:	-
Height:	25 cm
Length:	-
Depth:	-
Diameter:	13 cm

Hole Diameter:	-
Hole Depth:	-
Net weight:	1,5 Kg

#### Light Source

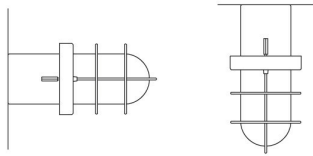
Watt:	15W E27
Lumen:	0 lm
Light Source:	led
duration:	25000
CCT:	3000K
Energy degree:	A+

#### Device Specifications

Type of emission:	diffused	Power cable length:	-	Driver:	-
Power:	15W	Steel cable length:	-	Power supply assembly:	-
Light output:	1147lm	Glow Wire Test:	-	Power supply:	-
Beam angle:	-	Impact Resistance:	-	Type of dimming:	-
				Voltage:	230V



technical drawing

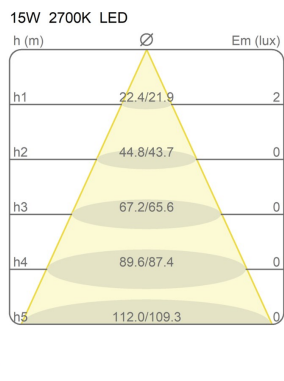
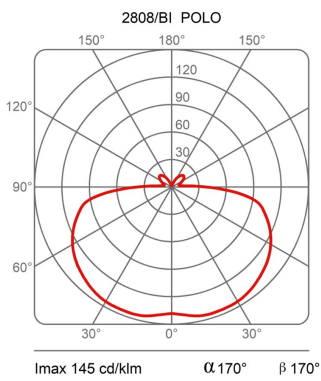
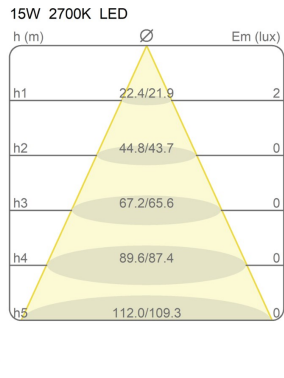
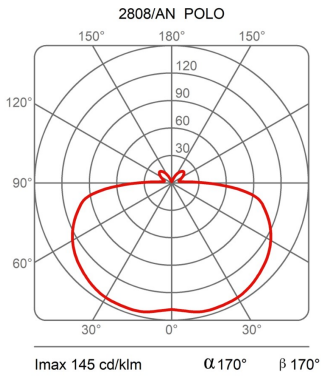


Dimensions

Width: -  
Height: 25 cm  
Length: -  
Depth: -  
Diameter: 13 cm

Hole Diameter: -  
Hole Depth: -  
Net weight: 1,5 Kg

photometrics data





## SISTEMA POLO 2808/BI

design elio martinelli, 1986

